

# Protecting Water in Carver & Scott County

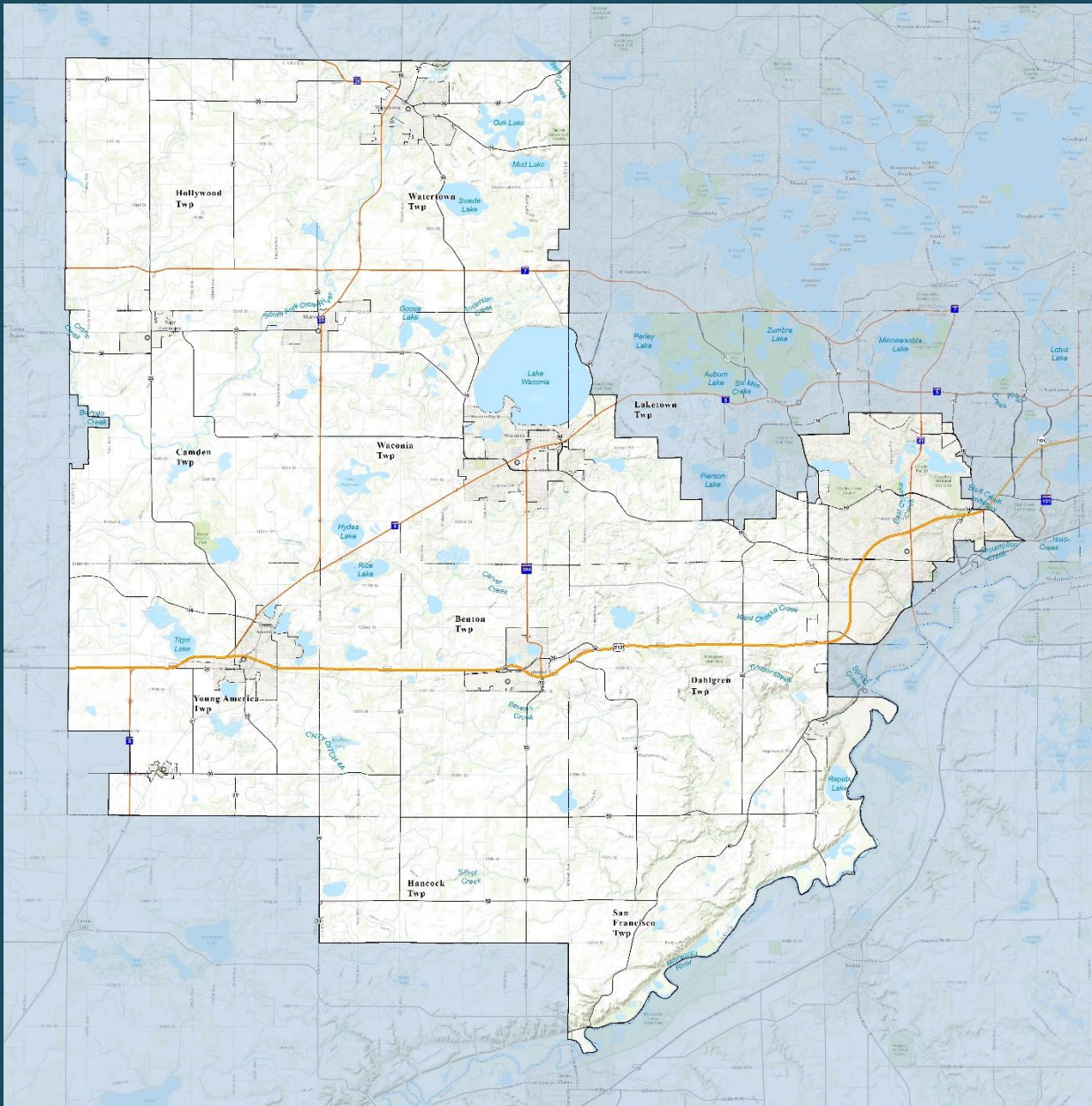


A scenic view of a lake with a dark overlay on the left side containing text. The background shows a clear blue sky, a line of green trees on the far shore, and reeds in the foreground. The text is white and centered within the dark area.

# Carver County Water Management Organization

Who

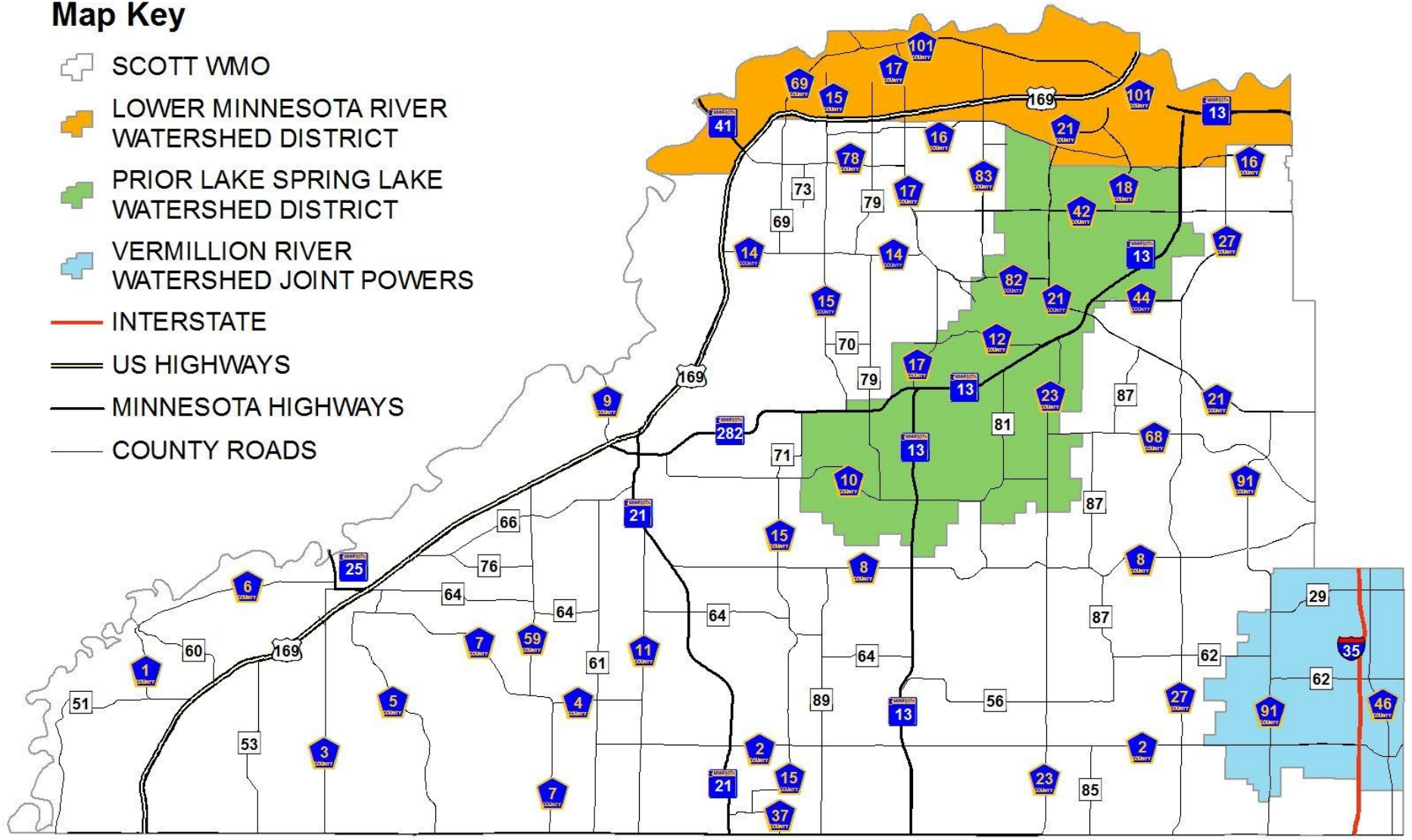
What

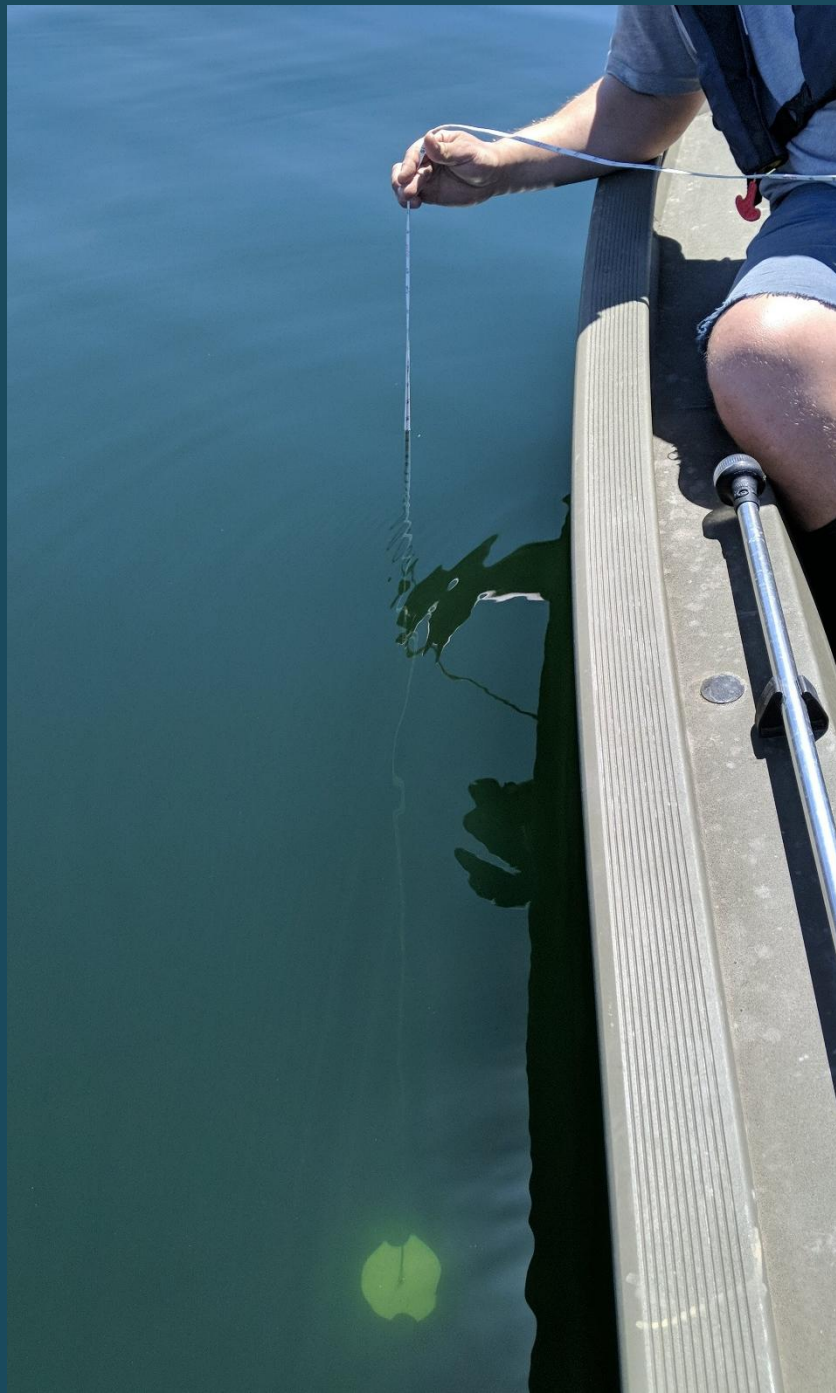


# WATERSHED JURISDICTION BOUNDARIES

## Map Key

- SCOTT WMO
- LOWER MINNESOTA RIVER WATERSHED DISTRICT
- PRIOR LAKE SPRING LAKE WATERSHED DISTRICT
- VERMILLION RIVER WATERSHED JOINT POWERS
- INTERSTATE
- US HIGHWAYS
- MINNESOTA HIGHWAYS
- COUNTY ROADS





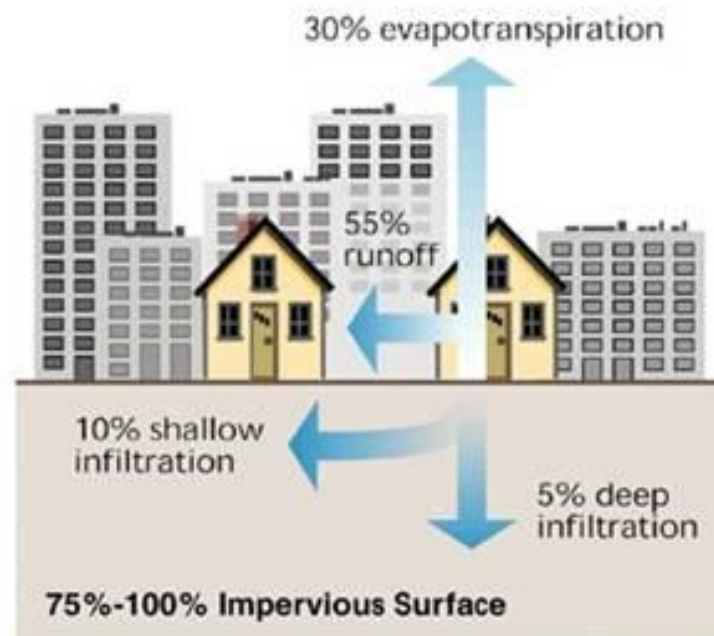
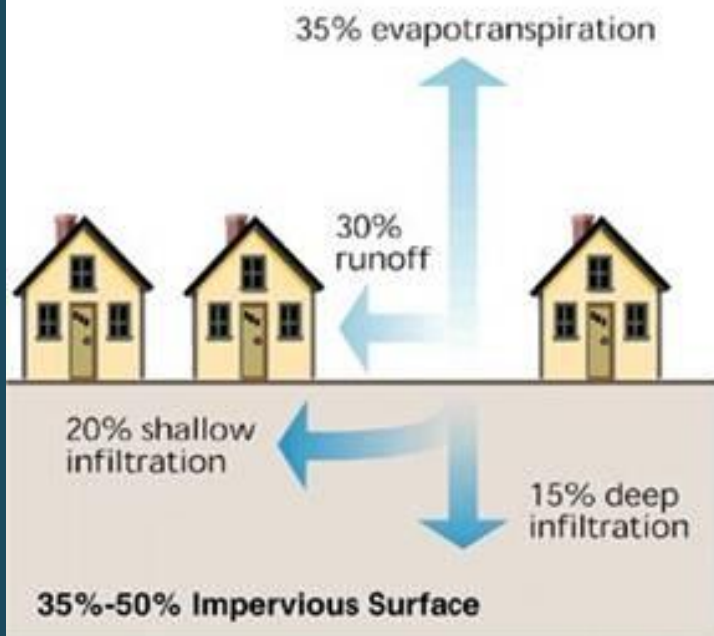
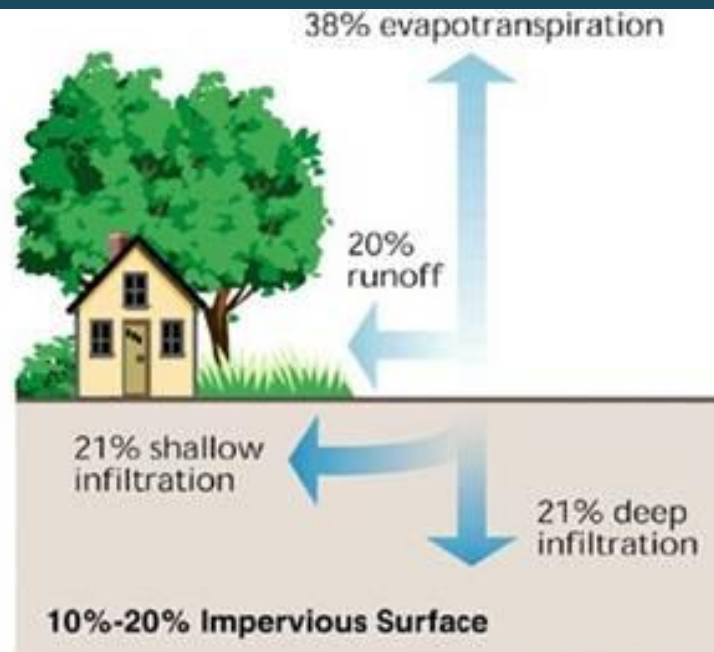
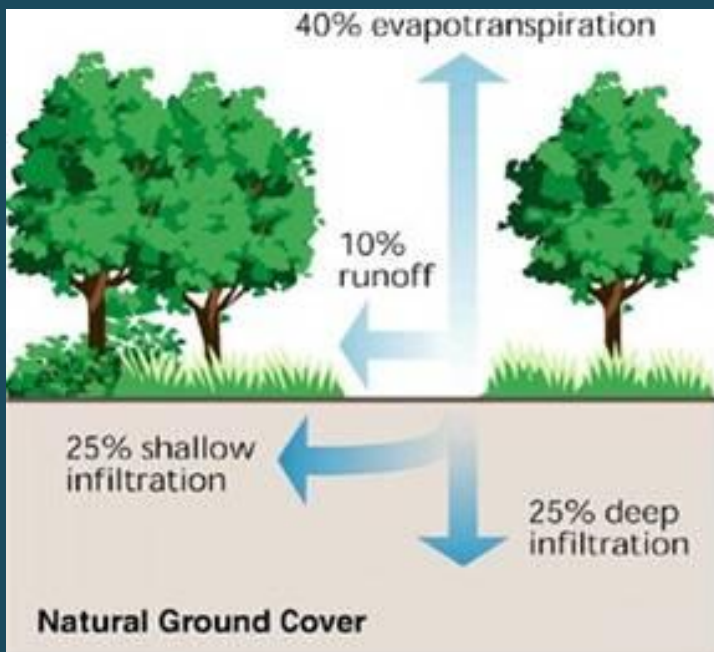
# Water Quality



# Protecting lakes and rivers







# To reduce pollution to waters

REDUCE AMOUNT

REDUCE POLLUTANTS



# REDUCE AMOUNT



Typical  
Residential  
Property

+ “Green Concrete” Compacted Lawn

8,390 s.f. “impervious” x 1” rain  
(if infiltrates first ¼” of rain)

= **3,880 gallons of runoff**

1,500 s.f. house (& patio) x 1” rain  
= **925 gallons of runoff**

1,000 s.f. driveway x 1” rain  
= **617 gallons of runoff**

In a 1” rainfall  
Potential Runoff:  
**5,422 gallons**

Storm drain

Street

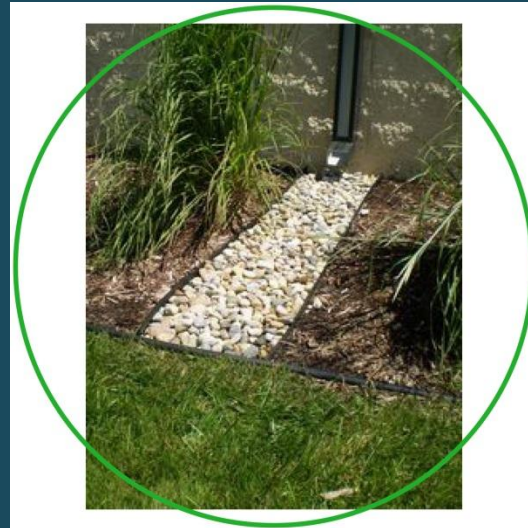
Gregg Thompson, MASWCD

# Simple Solutions

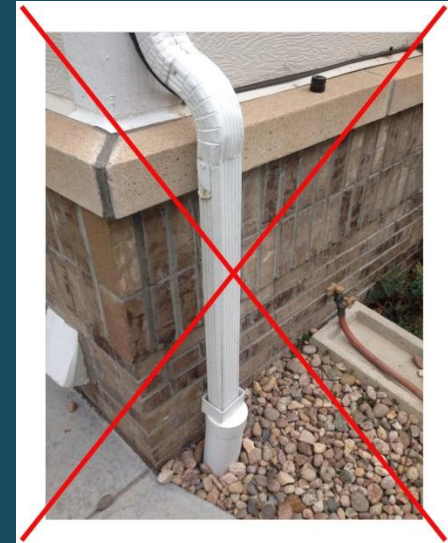
- Downspout location



Downspout over impermeable surface



- Downspout over permeable surface



- Directly connected downspout

# Rethinking Turf Lawns



# Reducing Lawns

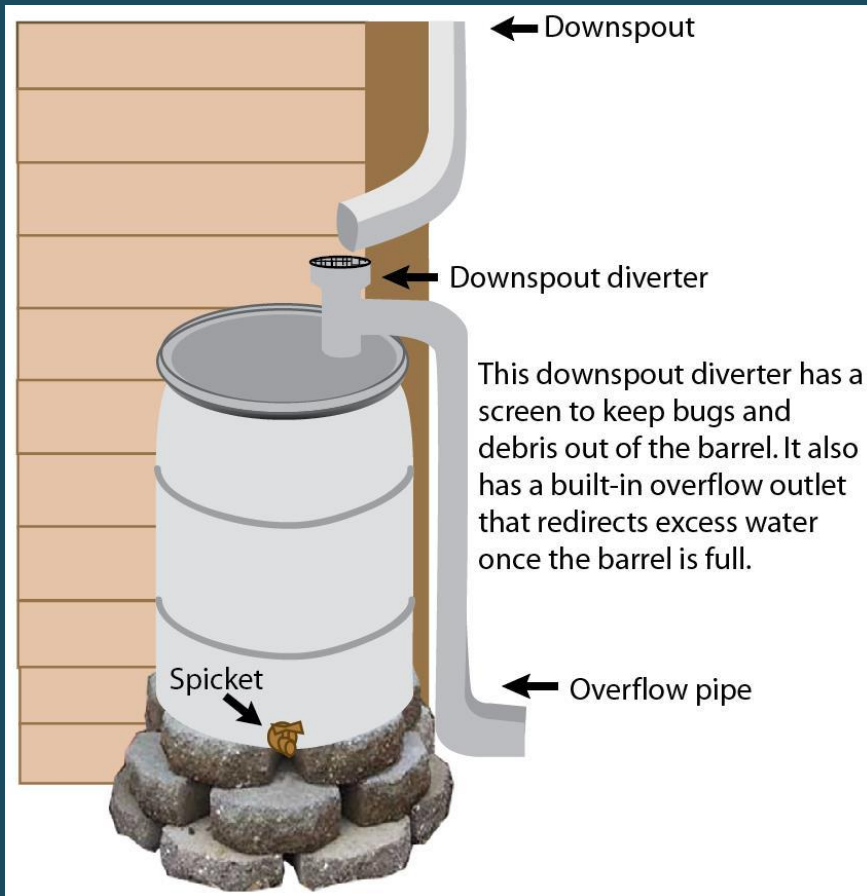


# Polliantor Lawns





# Rainbarrels/Cisterns



# Raingardens



# Bio Swales and Dry Creek Beds



# Permeable Pavers



# REDUCE POLLUTANTS





Keep curbs, driveways and  
sidewalks clean

Sweep up! Rake up! Pick up!



Adopt a Storm Drain  
[adopt-a-drain.org](http://adopt-a-drain.org)



Pick up waste



Copyright 2009 AdrianDanciu



# Sweep & Dispose



# Proper salt use



SHOVEL first

Scatter 2-3 inches apart

Watch temp

Sweep up extra

# Fertilizing

Learn your soil needs

Follow recommendations

Slow release

Leave grass clippings

Mulch leaves



# Carver County Cost Share Program

Up to 75% match of eligible expenses

Up to \$5,000 per project

Water Quality improvement projects

Landowners, Not-for-profit and religious organizations, Local government agencies, Public and Private Schools, and Private Businesses

Thanks!